

PPG Foundation

National Merit Scholarship Recipients

2024



Felix Airhart
Mississippi State University
Computer Engineering



Gabriella Allen
Ohio State University
Microbiology



Nikolai Bell
Amherst College
Philosophy



Nathaniel Chinman
Brown University
Mathematics & Linguistics



Elliot Clarkson
Miami University
International Studies & Linguistics



Kaj Colby
Carnegie Mellon University
Chemical Engineering



Emma Connor*
Southern Adventist University
Nursing



Nina Cranor
Massachusetts Institute of
Technology
Mechanical Engineering



Ever Criddell
Louisiana State University
Political Communication &
Sociology



Christian Dixon
Dartmouth College
Biomedical Engineering



Philip Elicker*
North Carolina State University
Electrical & Computer Engineering



Colin Grant*
Kent State University
Computer Science



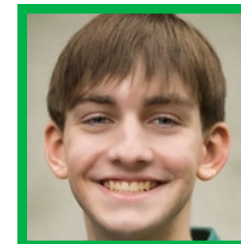
**Emiliano Gutierrez
Berlanga***
Harvard University
Government



Bryce Hanson
University of Wisconsin-Madison
Mechanical Engineering



Jiyu Hong
Duke University
Biology & English



Mitchell Kulfan*
Rensselaer Polytechnic Institute
Mechanical Engineering or Materials
Science



Brennan Leem
University of Southern
California
Human Biology



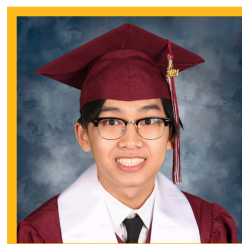
Ian Love*
Pennsylvania State University
Computer Engineering



Chase Majkowski
Brown University
Sociology & Computer Science



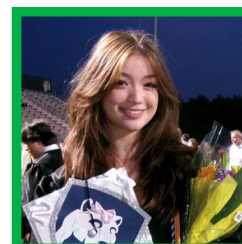
Chloe Mance
Oberlin College
Art History & Mathematics



Jayden Manyrath
Southern Methodist University
Computer Science



Sneha Nandwani
The College of New Jersey
Medical Program & Spanish



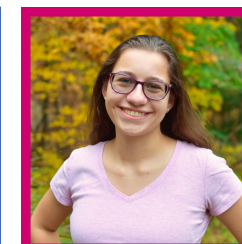
Lyra Ogle*
Pennsylvania State University
Mechanical Engineering



Nikhil Patwardhan*
Purdue University
Aerospace Engineering



Aarushi Raj*
University of North Carolina
at Chapel Hill
Biology & English



Natalie Robinson*
Duquesne University
Computer Science



Isaiah Trumbull
Harvard University
Undecided

Not pictured:

Parnitha Bandla, Julia Jiang, Elena McCutcheon & Nicholas Walls

*indicates PPG employee-child

University & majors are as of August 2024